

Globanet Health Check Tool Offers Efficient Data Gathering for Enterprise Vault Health Checks

Traditional Enterprise Vault health check engagements involve a lot of manual effort by a consultant and can be problematic for two reasons:

- 1.) Collecting the environmental data and inserting it into the final health check document manually carries a risk of oversights and inaccuracies
- 2.) Collecting the environmental data and inserting it into the final health check document manually is very time consuming, and limits the amount of time available for analysis

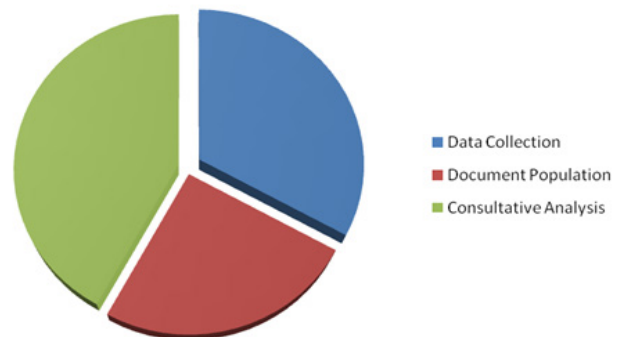


Figure 1 - Typical Health Check Effort by Activity

EV services organizations have difficulties justifying the health check offering to their clients in some instances, leaving their clients at risk of not knowing if their archive systems' configurations are aligned with best practices, or potentially vulnerable to system failure because of an environmental issue. During a typical Health Check engagement, a consultant's time can be allocated to the activities in Figure 1.

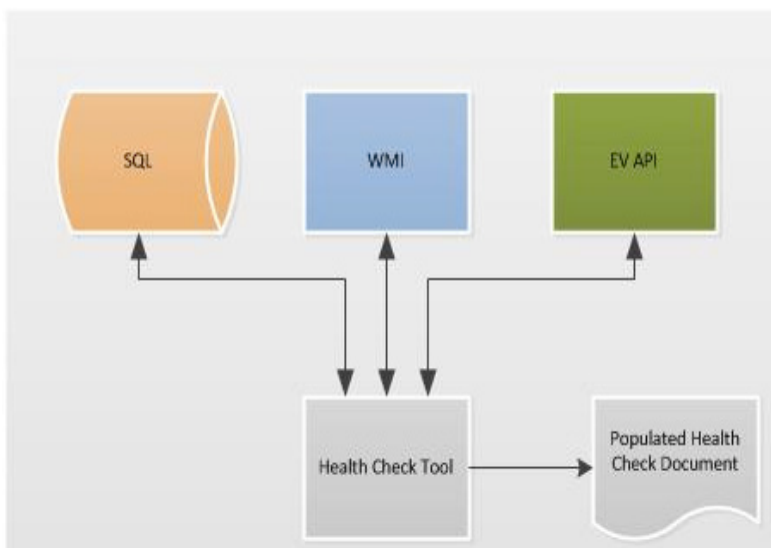


Figure 2 - Health Check Tool Infrastructure

As shown in the figure above, the majority of consultant time during a health check is spent gathering data points and populating the final deliverable with this data, while the minority of the time is spent doing what the client is actually interested in: *the expert analysis!*

Globanet Health Check Tool was designed to solve the two problems noted above with the following solutions:

- 1.) Automating the data gathering and document population to eliminate errors and inaccuracies
- 2.) Speeding up the collection and population process in order to enable more time to be spent on analysis and recommendations

How It Works

Globanet Health Check Tool is a package of two tools. The first tool collects data from the client's environment, which can then be sent to the client with instructions to run it on their own, if desired.

It scans the client's EV environment from the EV Directory database, and then collects all relevant environmental and configuration data by utilizing WMI, SQL queries and the Enterprise Vault API, as shown in Figure 2 above.

The second tool processes the output of the first tool, and populates a Microsoft Word document template with all the detailed information gathered, and pre-analyzes many of the settings to report status in comparison with Symantec's best practice recommendations. The consultant can then review the document and write up recommendations.

Key Features

Globanet Health Check Tool Allows organizations to immediately:

- **Bullet proof data** gathering without mistakes
- **Supports gathering Exchange Archiving** settings today – other archive settings coming soon
- **Ability to enable clients to gather data for consultant**, saving consultant time for analysis
- **Automatically tests many settings** against best practice recommendations
- **Automated** document population
- **Reduces level of effort** to deliver EV health check services

Technical Requirements

Globanet Health Check Tool has a small set of requirements:

- A single processor 2.2 GHz or above (dual processor recommended); physical or virtual machine
- Windows 2003 or above (excluding Windows Server "Core" Edition)
- Microsoft .Net 4.0 Runtime
- Enterprise Vault versions 8 and above
- The Enterprise Vault service account should be used to run the collector tool

Pricing & Availability

Globanet Health Check is available today. A trial version is available for organizations that want to evaluate the benefits of a more streamlined health check data collection process. For more information or a product demonstration, contact us at **888.427.5505**.

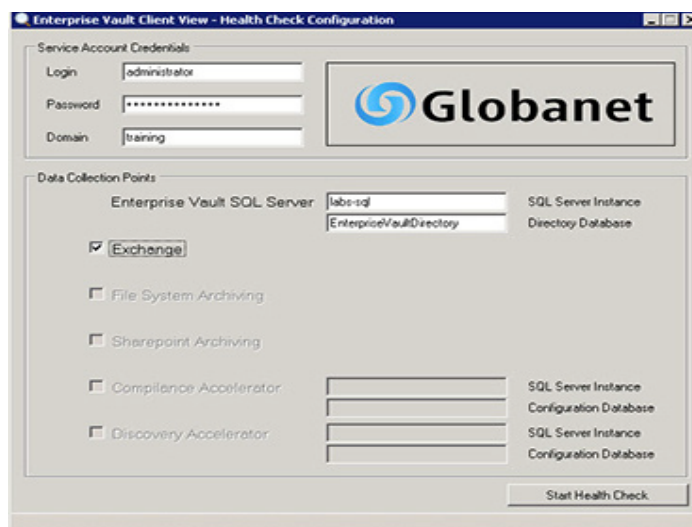


Figure 3 - Health Check Collection Tool

About Globanet

*Globanet is a leading provider of archiving and eDiscovery solutions worldwide. Founded in 1996, the company is a pioneer in archiving and intelligent information governance, and has developed a portfolio of software and services to help organizations manage data from creation to expiry. Globanet's proprietary solutions include the Merge1 message capture platform and Migrate data migration software. A Symantec Platinum Partner with Master Specialization in Archiving and eDiscovery, its professional services team has extensive experience with industry-leading Enterprise Vault and Clearwell. Globanet's broad range of services includes policy and solution design, installation and configuration, data migration, custom add-ons and project-based eDiscovery consulting. For more information, call **888.427.5505** or visit www.globanet.com. Visit the Globanet Blog at <http://www.globanet.com/blog> or follow us on Twitter at <http://twitter.com/globanet>.*

