

FSA Migrator 2.6

File Server Migrations - Made Easy

FSA Migrator

Consolidate your archived and non-archived File Server data - with ease!

Many organisations struggle with the continuous growth of their file servers and the data they contain. Over time this explosion of data becomes more and more costly to manage. While a number of customers have turned to Enterprise Vault for providing a cost effective file server management solution, they increasingly see challenges during server migrations and consolidations:

The dual nature of the data - some archived, some online – makes it increasingly difficult to move file shares or servers with the standard toolset.

This leads to either ignoring potential savings or spiralling costs of management when realizing them.

The primary aim of QUADROtech's FSA Migrator is to provide a fast, reliable and intuitive toolkit for file system migrations, consolidations and server restructuring. It helps Enterprise Vault administrators to simplify those migrations, reduce the cost and shorten the migration time.



Intuitive Admin Interface

Intuitive Admin Interface - Information is available to help you to configure, operate and manage your migration

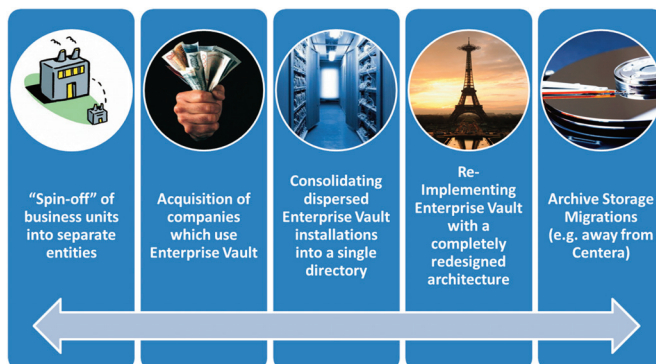
Enterprise Vault provides a simple command line tool to support the tasks mentioned above. This is cumbersome to learn, difficult to monitor, error prone and can lead to unintended results.

FSA Migrator provides a fast and intuitive graphical interface with progress information and performance counters.

The migration can be customised in many ways: You can separately schedule the migration of archived and non-archived data and allocate a different numbers of process threads to handle those data types. Once the source and target locations are mapped, the multi-threaded FSA Migrator engine will kick-in according to the defined schedule and migrate the archived and non-archived files with maximum performance and resilience. It detects potentially corrupt files, retries migration operations a defined number of times and recovers from transient errors gracefully.



Use Cases



FSA Migrator covers the most common use cases to help you overcome the typical migration challenges. It can be used to consolidate complete file servers or selected FSA-enabled file shares. It even has the ability to save space on the target storage by re-processing the migrated data and ingest into an Enterprise Vault target environment.

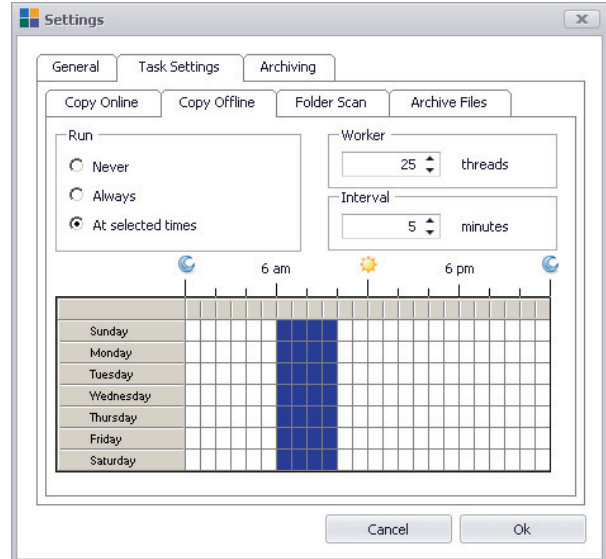
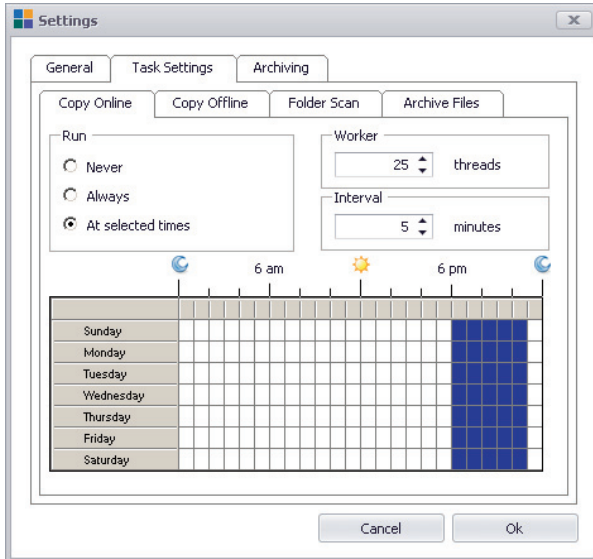
FSA Migrator can also be used where data needs to be spun off into a secondary environment, for example in the situation where parts of a company are sold and the data for the new division needs to be separated.

FSA Migrator can also be used to ingest FSA-Enabled data from remote offices or companies that have been acquired, simplifying the cost and time taken to integrate them into the central infrastructure.

Key Features

- Migrate online and archived data with a single tool
- Map multiple source and target locations
- Specify lists of files to migrate via the command line
- Intuitive user interface displaying status and progress information
- Separate schedules for migrating archived and non-archived files
- Configurable number of threads for archived and non-archived files
- Can be run from an administrative workstation
- Detection mechanism for corrupt files (even if the EV API falsely claims successful extraction)
- Can directly ingest data into a target Enterprise Vault environment during the migration

Migrating with FSA Migrator



FSA Migrator allows for a high level of customisation to meet your requirements.

Source and target mapping, schedules, processing threads: All can be configured to meet your performance or network load requirements.

File Name	Folder Name	Type	Archive Id	Saveset Id	Size	Export Date UTC
CH_Archive_Revise_DS_20101006_engl2...	FSA Shell Exten...	Archi...	10ADD89C...	20121008...	334179	11/10/2012
ArchiveShuttle Workflow Descriptions - Co...	FSA Shell Exten...	Archi...	10ADD89C...	20121004...	464727	11/10/2012
ArchiveRo.docx	FSA Shell Exten...	Archi...	10ADD89C...	20121002...	13802	11/10/2012
Addendum to the TSANet International Co...	FSA Shell Exten...	Archi...	10ADD89C...	20120928...	5131	11/10/2012
FD_Requirements_Guide-Ax03.docx	FSA Shell Exten...	Normal			1105	11/10/2012
FD-Admin-DiscoveryScanner-2.6.docx	FSA Shell Exten...	Normal			1883	11/10/2012
EV_Filtering_Framework_Documentation.d...	FSA Shell Exten...	Normal			1323	11/10/2012
EWNS-3-Ax01.docx	FSA Shell Exten...	Normal			16622	11/10/2012
EWnearSync_ROI_Report-Ax03.docx	FSA Shell Exten...	Normal			75727	11/10/2012
EV2EV.docx	FSA Shell Exten...	Normal			16559	11/10/2012
enterprise-vault-backups-v1.pdf	FSA Shell Exten...	Normal			230928	11/10/2012
Branching and Merging Guide.pdf	FSA Shell Exten...	Normal			3038	11/10/2012
Branching and Merging Guide - Local Works...	FSA Shell Exten...	Normal			3443	11/10/2012
Branching and Merging Guide - Illustrations...	FSA Shell Exten...	Normal			1097	11/10/2012
Branching and Merging Guide - Illustrations...	FSA Shell Exten...	Normal			1319	11/10/2012
Branching and Merging Guide - Cheatsheet...	FSA Shell Exten...	Normal			665722	11/10/2012
Branching and Merging Guide - Cheatsheet...	FSA Shell Exten...	Normal			414243	11/10/2012
Branching and Merging Guide - Cheatsheet...	FSA Shell Exten...	Normal			490631	11/10/2012
Branching and Merging Guide - Cheatsheet...	FSA Shell Exten...	Normal			399226	11/10/2012
Branching and Merging Guide - Cheatsheet...	FSA Shell Exten...	Normal			424806	11/10/2012
Base Agreement Symantec Enabled 11.10...	FSA Shell Exten...	Normal			76895	11/10/2012
ArchiveShuttle Workflow Descriptions-A01...	FSA Shell Exten...	Normal			421648	11/10/2012
ArchiveShuttle TN02.pptx	FSA Shell Exten...	Normal			3558	11/10/2012

Any issues are displayed in an status window and can be exported to a variety of formats for further investigation.

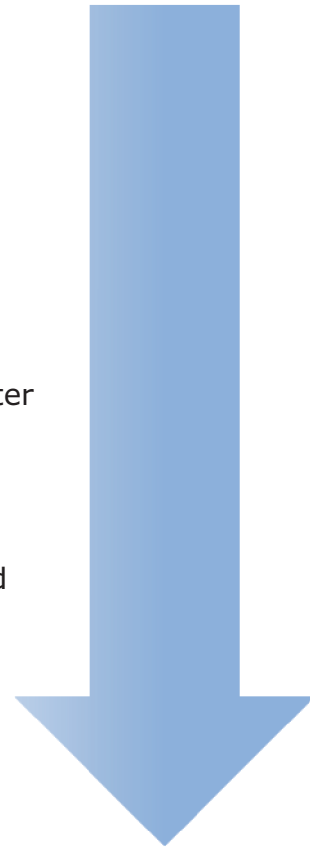
Built-in detection for corrupt files ensures the data integrity of the items retrieved from Enterprise Vault.

During the migration to the target environment, those files can be directly ingested into an Enterprise Vault system, immediately saving storage on the primary storage.



5 Simple Steps to Migrate Your FSA-enabled Fileshares

- 1 Select the source shares you want to migrate from
- 2 Map the corresponding target location(s)
- 3 Decide whether to ingest directly into EV after the share is successfully migrated
- 4 Configure schedules, number of threads and advanced settings
- 5 Sit back, relax and monitor the progress

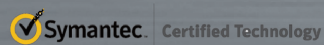


QUADROtech have worked closely with Microsoft, and Symantec in order to get certification for Windows Server 2012.



Replace your complex Robocopy scripts with a fast intuitive interface.

In all our latest tests, the migration of online files has proven to be faster with FSA Migrator than with Robocopy, the standard command line copy tools or Windows Explorer.



QUADROtech Solutions AG

Alpenstrasse 15
6304 Zug
Switzerland

fon +41 41 511 3120

fax +41 800 001 672

mail: info@quadrotech-it.com

<http://www.quadrotech-it.com>